

Compliance Directive for Cranes and Derricks in Construction Standard CPL 02-01-063

As you know cranes and derricks are essential for many tasks in construction and are a common sight on any job site. As useful as such a machinery can be (due to their size and power) without careful and intentional safety measures in place, They can cause very dangerous and potentially life threatening conditions. With this in mind OSHA standards are constantly evolving to keep job sites safe Also citations and fines are increasing for non-compliance.

On February 11, OSHA released Directive CPL 02-01-063. This version of the compliance directive replaces “R. Operator Certification from CPL 02-01-057” with “R. Operator Training, Certification, and Evaluation.” The new section includes inspection guidance and citation policy that reflects changes to 29 CFR 1926 Subpart CC—Cranes and Derricks in Construction that were made in the final rule, Cranes and Derricks in Construction: Operator Qualification, 83 FR 56198.

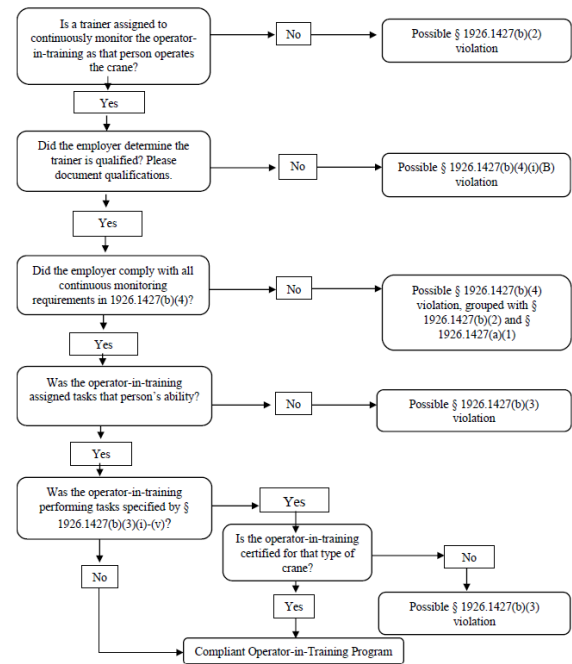
Below I have included a quick checklist along with the flow charts provided in this new directive to make it easier to ensure compliance in the future for Operator-in-Training, Operator Certification/Licensing, & Crane Operator Evaluation.

If you would like to review this directive in its entirety please go to the adress below:

https://www.osha.gov/sites/default/files/enforcement/directives/CPL_02-01-063.pdf

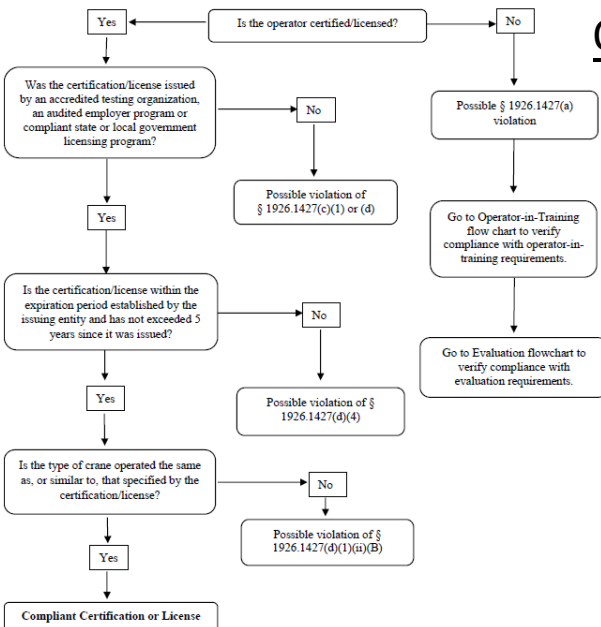
Operator-in-Training Checklist:

- Is a trainer assigned to continuously monitor the operator-in-training as that person operates the crane?
- Did the employer determine the trainer is qualified? Please document qualifications
- Did the employer comply with all continuous monitoring requirements 1926.1427(b)(4)?
- Was the operator-in-training assigned tasks that person's ability?
- Was the operator-in-training performing tasks specified by § 1926.1427(b)(3)(i)-(v)?

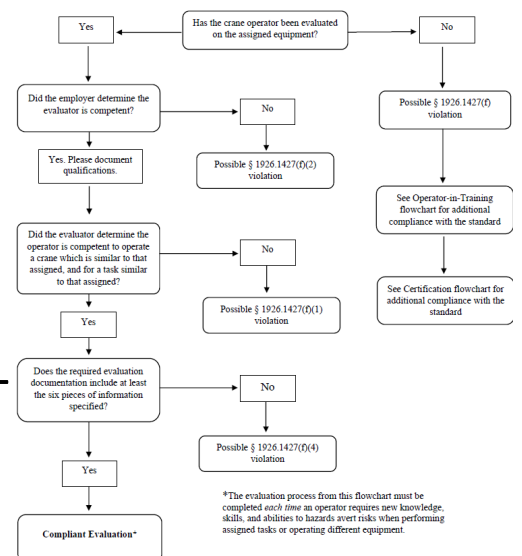


Operator Certification/Licensing Checklist:

- Was the certification/license issued by an accredited testing organization, an audited employer program or compliant state or local government licensing program?
- Is the certification/license within the expiration period established by the issuing entity and has not exceeded 5 years since it was issued?
- Is the type of crane operated the same as, or similar to, that specified by the certification/license?



- Was the certification/license issued by an accredited testing organization, an audited employer program or compliant state or local government licensing program?
- Is the certification/license within the expiration period established by the issuing entity and has not exceeded 5 years since it was issued?
- Is the type of crane operated the same as, or similar to, that specified by the certification/license?



Crane Operator Evaluation Checklist:

- Did the employer determine the evaluator is competent?
- Did the evaluator determine the operator is competent to operate a crane which is similar to that assigned, and for a task similar to that assigned? If yes, Please document.
- Does the required evaluation documentation include at least the six pieces of information specified?

*The evaluation process from this flowchart must be completed each time an operator requires new knowledge, skills, and abilities to hazards avert risks when performing assigned tasks or operating different equipment.